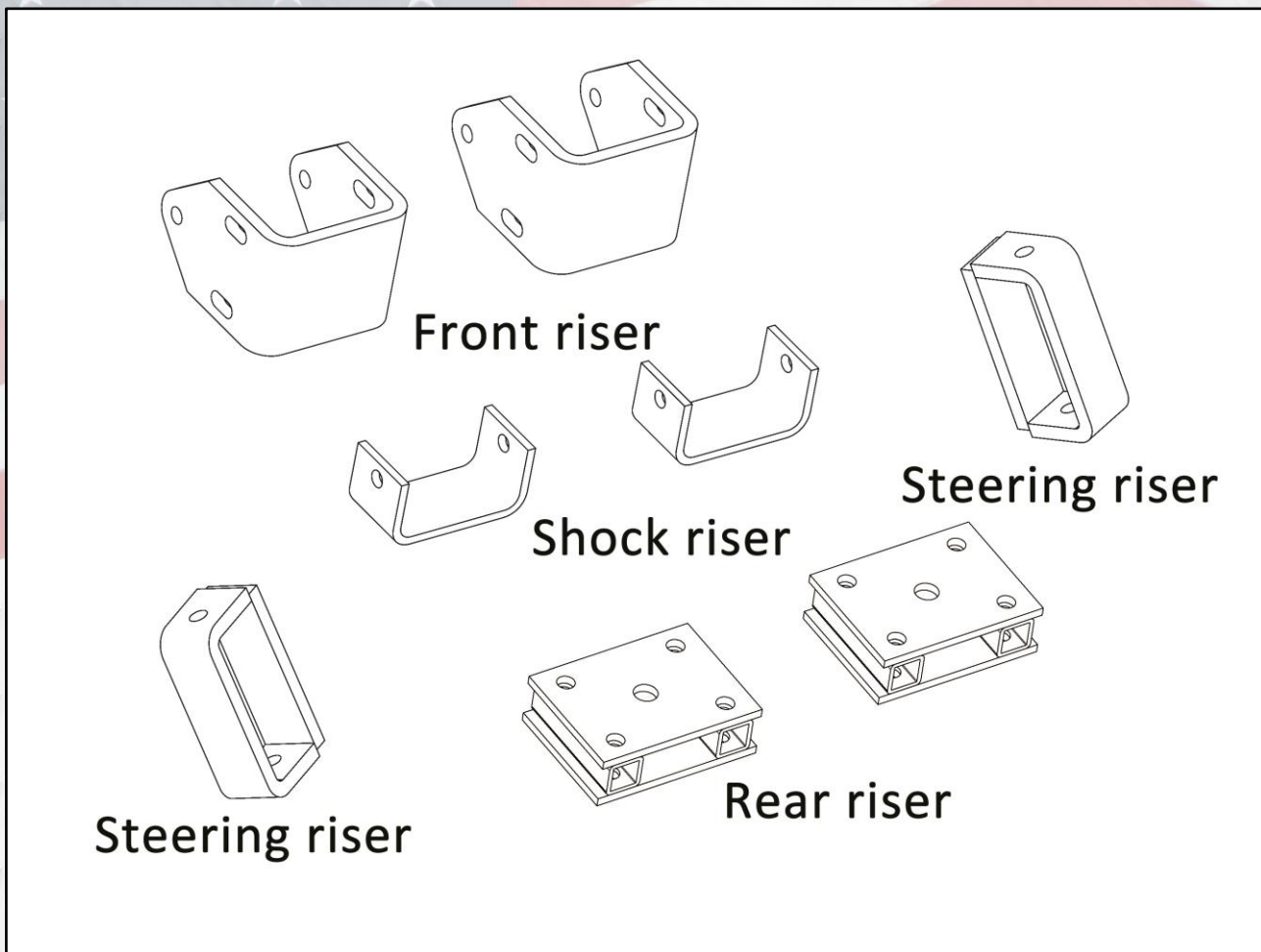




**4" BLOCK LIFT KIT
FITS EZGO MED/TXT 94-01.5
GAS**

Product is subject to change without prior notice.

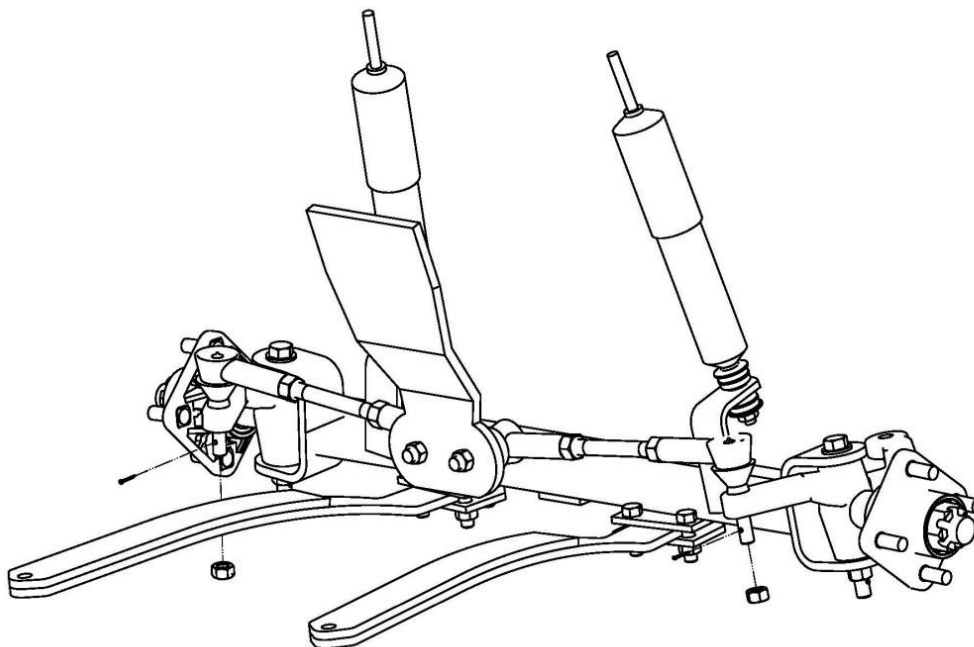
SAFETY CAUTION! Turn the 'Tow/Run switch to the tow position(if applicable) and disconnect the battery and or batteries before working on this equipment. You must have a suitable jack and jack stands. Safety glasses should be worn for your protection.



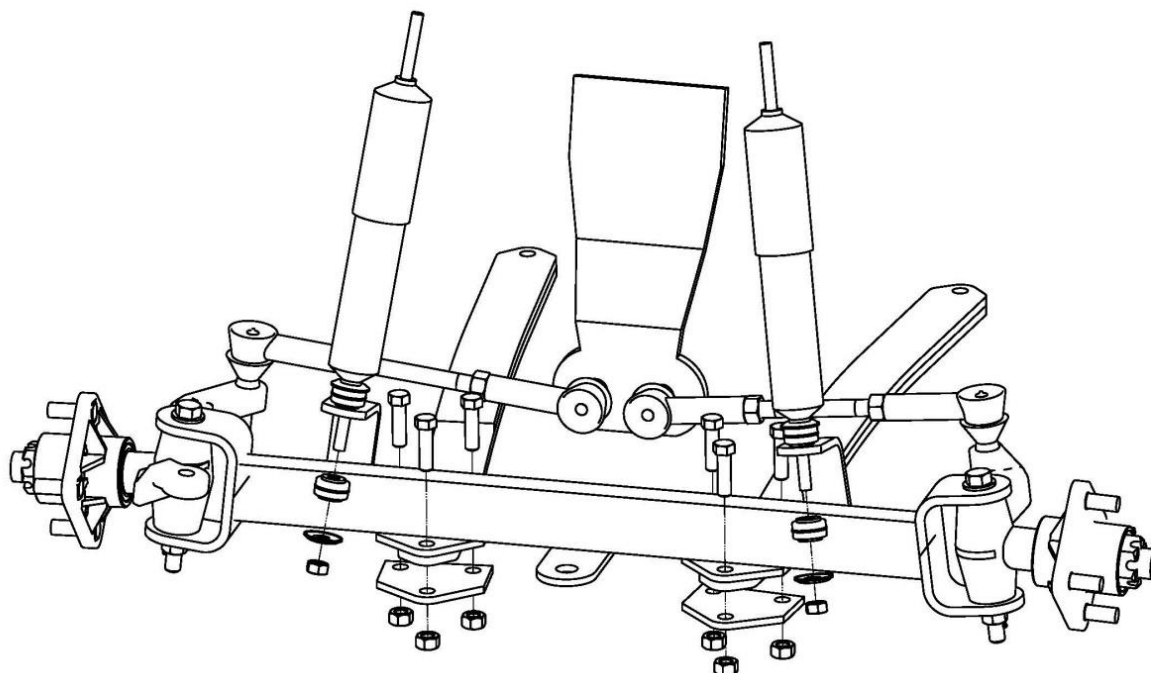
Bag#	Place	Name	Spec	Qty
#1	Front riser	hex bolt	3/8-16*1 1/2	12
		flat washer	3/8	24
		lock nut	3/8	12
#2	Steering riser	hex bolt	7/16-2	2
		flat washer	7/16	4
		lock nut	7/16	2
#3	Shock riser	hex bolt	7/16-1 1/4	2
		flat washer	7/16	4
		lock nut	7/16	2
#4	Rear riser	hex Bolt	3/8-16*3 1/2	8
		flat Washer	3/8	16
		lock Nut	3/8	8

LIFT KIT INSTALLATION INSTRUCTIONS

EZGO MEDALIST/TXT 1994-2001.5, GAS

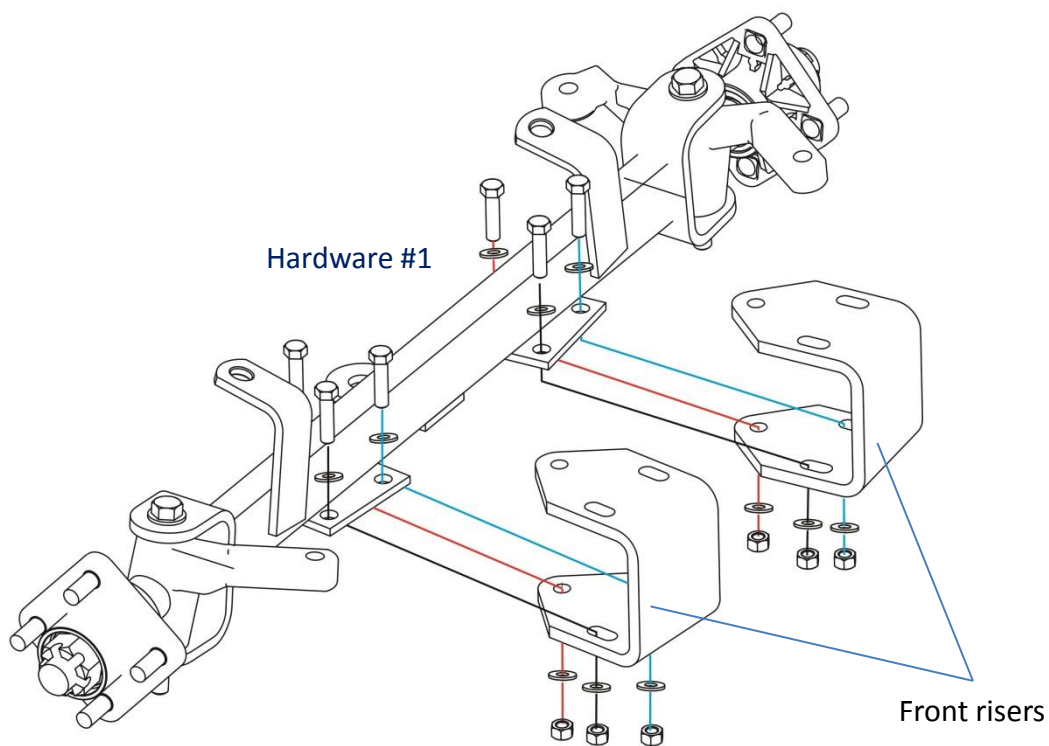


1. Raise the cart and support the front with jack stands. Remove tires and outer tie rod ends from the steering spindle arm. It is best to use a tie rod separator for removal to prevent damage to the stud threads.

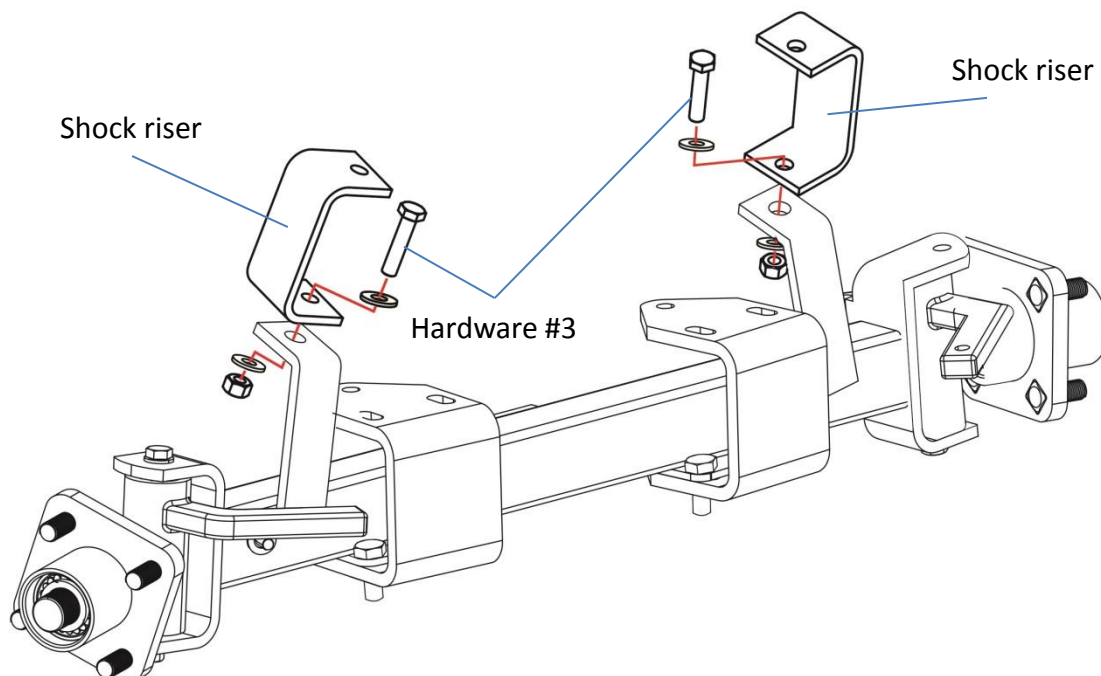


2. Remove the bottom shock nuts and hardware and keep them for reuse. Push the shock up and out of the way. Remove the six axle mounting bolts, then remove the axle. Retain hardware.

LIFT KIT INSTALLATION INSTRUCTIONS
EZGO MEDALIST/TXT 1994-2001.5, GAS

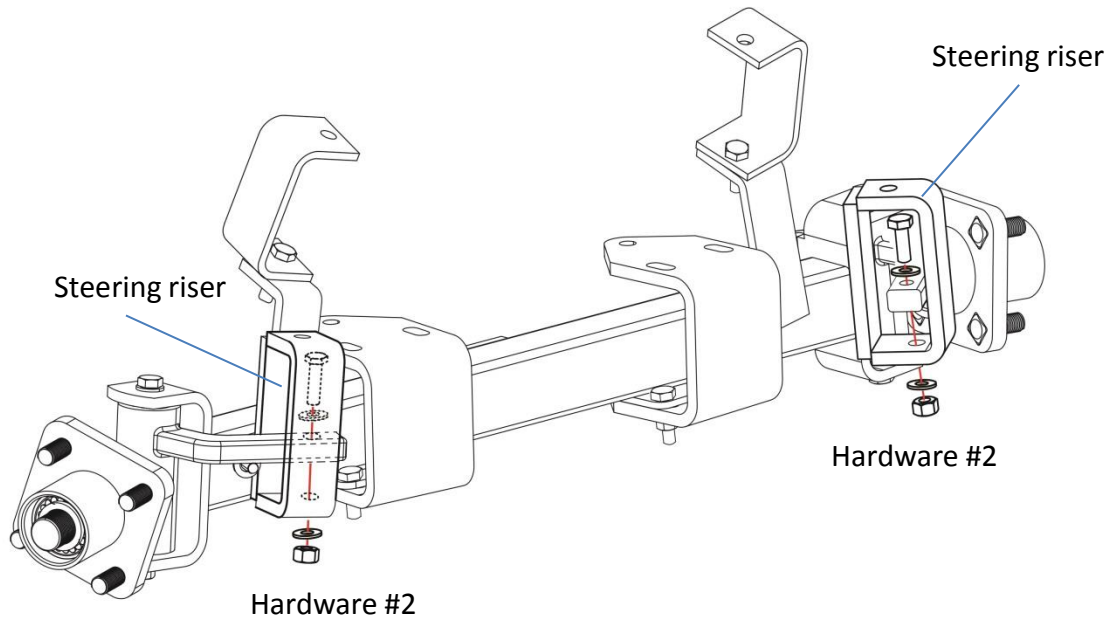


3. Mount supplied front risers to drop axle using supplied hardware #1, leaving the bolts loose.

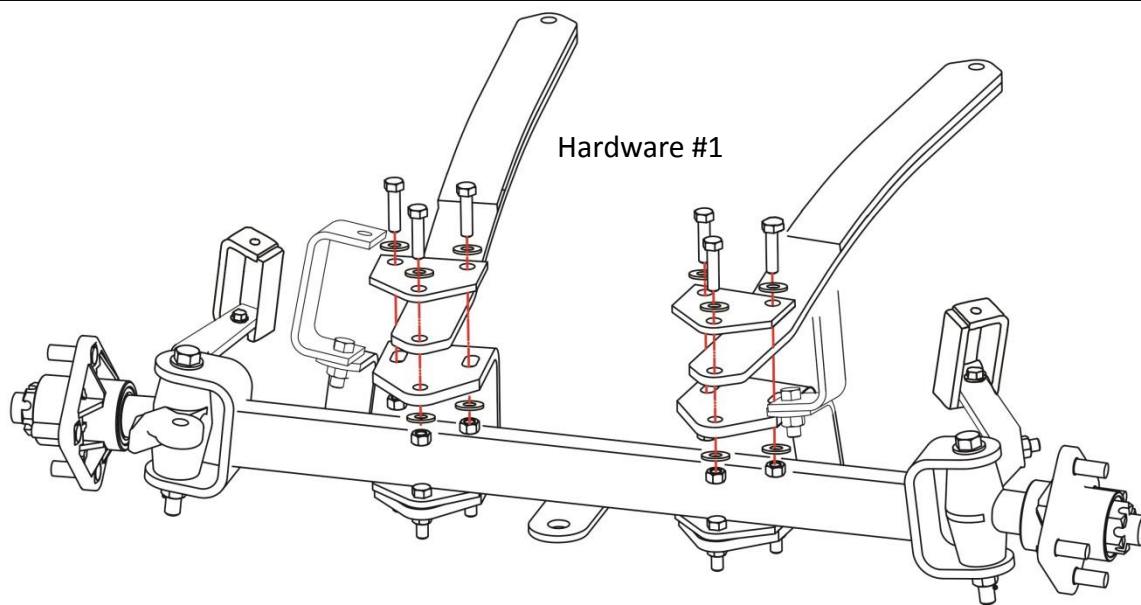


4. Install supplied shock risers on drop axle using hardware #3.

LIFT KIT INSTALLATION INSTRUCTIONS
EZGO MEDALIST/TXT 1994-2001.5, GAS



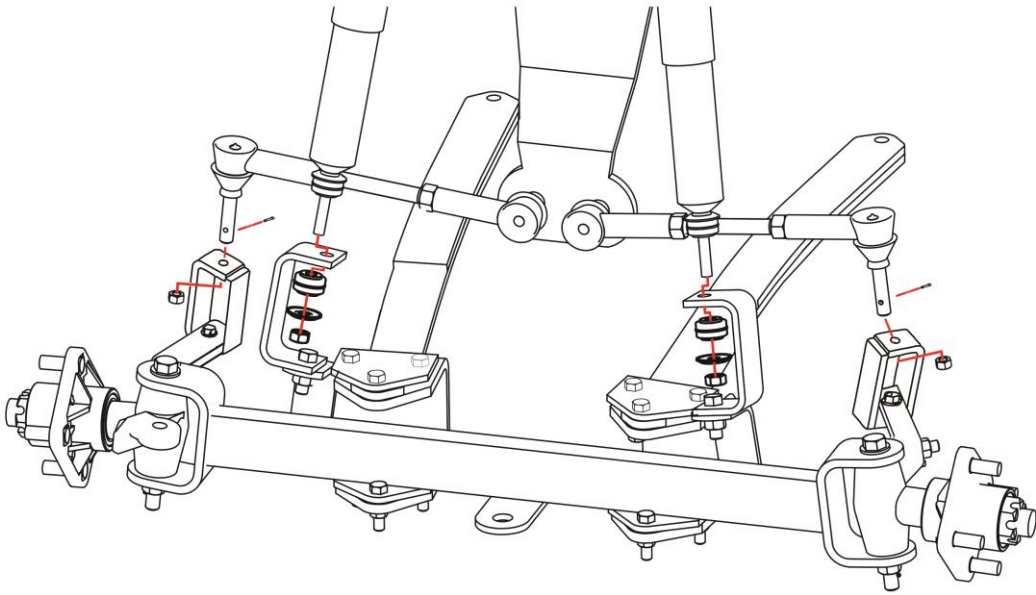
5. Install steering riser on spindle arm and leave the bolts loose using hardware #2.



6. Reattach front leaf spring and spring plate to front riser using remaining hardware #1.

LIFT KIT INSTALLATION INSTRUCTIONS

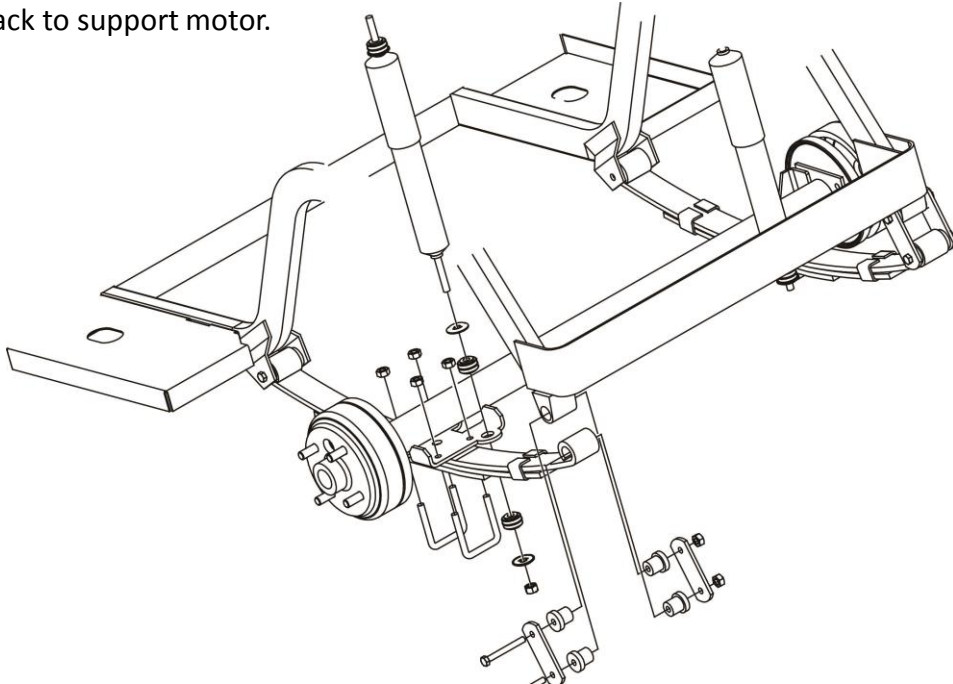
EZGO MEDALIST/TXT 1994-2001.5, GAS



7. Attach lower part of shock to shock riser using factory hardware. Attach tie rod end to steering riser use factory hardware. Make sure things are aligned and straight, tighten all hardware. Reinstall hubs and wheels and front installation is finished.

THE REAR

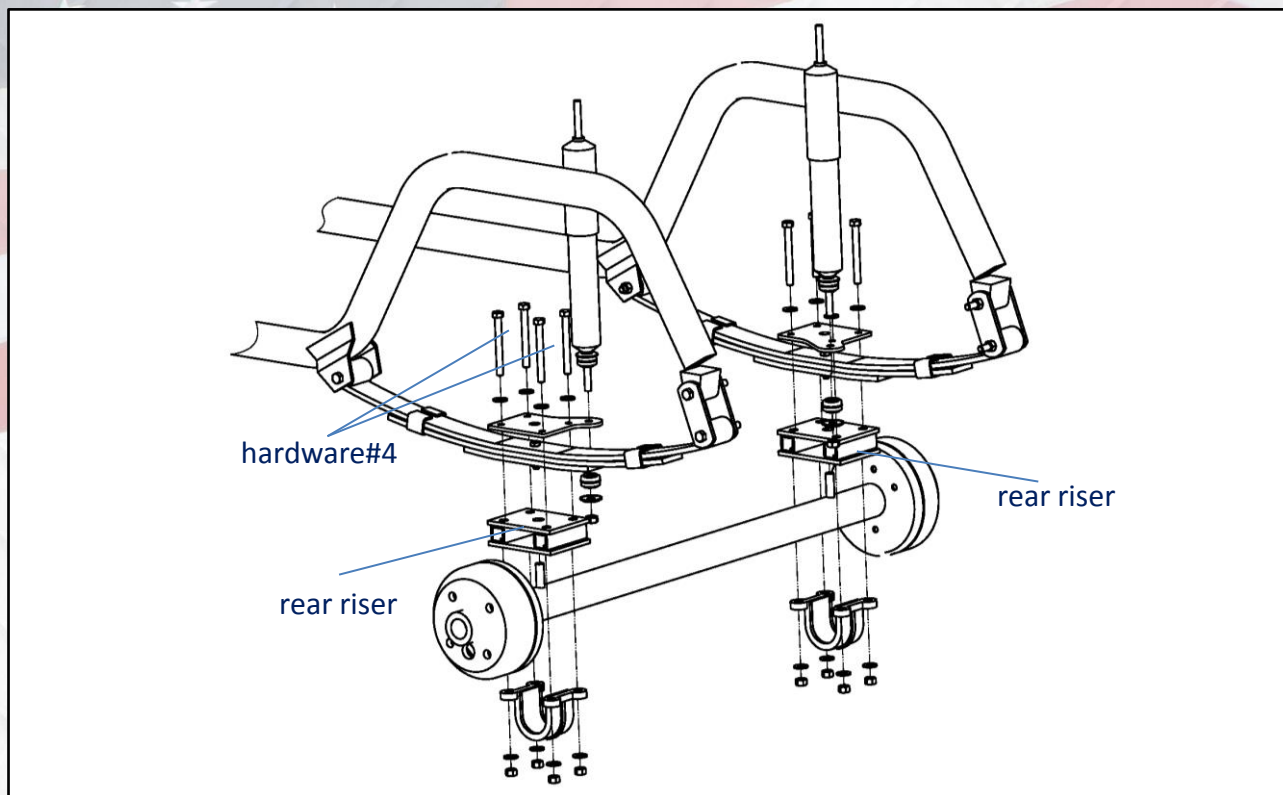
Ensure parking brake is still engaged and chock front wheels.
Use jack to support motor.



8. Unbolt the rear leaf springs from under the rear end. Save the front and rear leaf spring bolts for reinstallation of the leaf springs. Using the car jack lower the rear end of the cart.

LIFT KIT INSTALLATION INSTRUCTIONS

EZGO MEDALIST/TXT 94-01.5, GAS



9. Place the rear riser on top of the axle. Place the rear leaf spring on top of the rear riser. Place the stock shock plate on top of the spring. Make sure the keeper pins are lined with the locator hole.
10. Cut a notch in the rubber bushings so it will fit around the locator pin. Install the cap and rubber bushing from the bottom up using retained hardware.
11. Install the cap and rubber bushing from the bottom up. Install the bolts from the top of the shock plate through the riser and cap assembly using hardware #4.
12. Snug the bolts and install the assembly back into the cart mounting locations.
13. After everything is in place, tighten all the nuts and bolts.
14. Install the shocks and tighten until the bushings flatten to the size of the cup washer.
15. Once completed, reinstall wheels.



RETURN MERCHANDISE AUTHORIZATION

Dear Valued Customer,

Thank you for choosing Steeleng Golf Cart Accessories for your golf cart needs.

We apologize for the issues you are having with your purchase. We strive to offer the absolute best quality at the absolute best price.

To best serve you, we do need a little information to help process your return and/or exchange faster.

Please complete the following and include this entire form with your return.

Name

Shipped To Address

STATE

ZIP

Purchased with: eBay

Direct Phone Order

This is for EXCHANGE REFUND

Please describe reason for return:

Our Return Address:
Steeleng Golf Cart Accessories
3309 Laurens Road,
Greenville, SC 29607
Tele: 864-675-1103

For Office Use Only:

Received By: _____

Date _____

Refund Amount _____

Exchange Issued _____

****Steeleng Golf Cart Accessories reserves the right to charge a 15% restocking fee for all returned and/or exchanged items.**