

SGC



After installing this lift kit, the front wheels must be properly aligned. Failure to properly align the front wheels may result in decreased ability to control the Golf Cart which may result in a rollover or crash.

SGC DROP AXLE

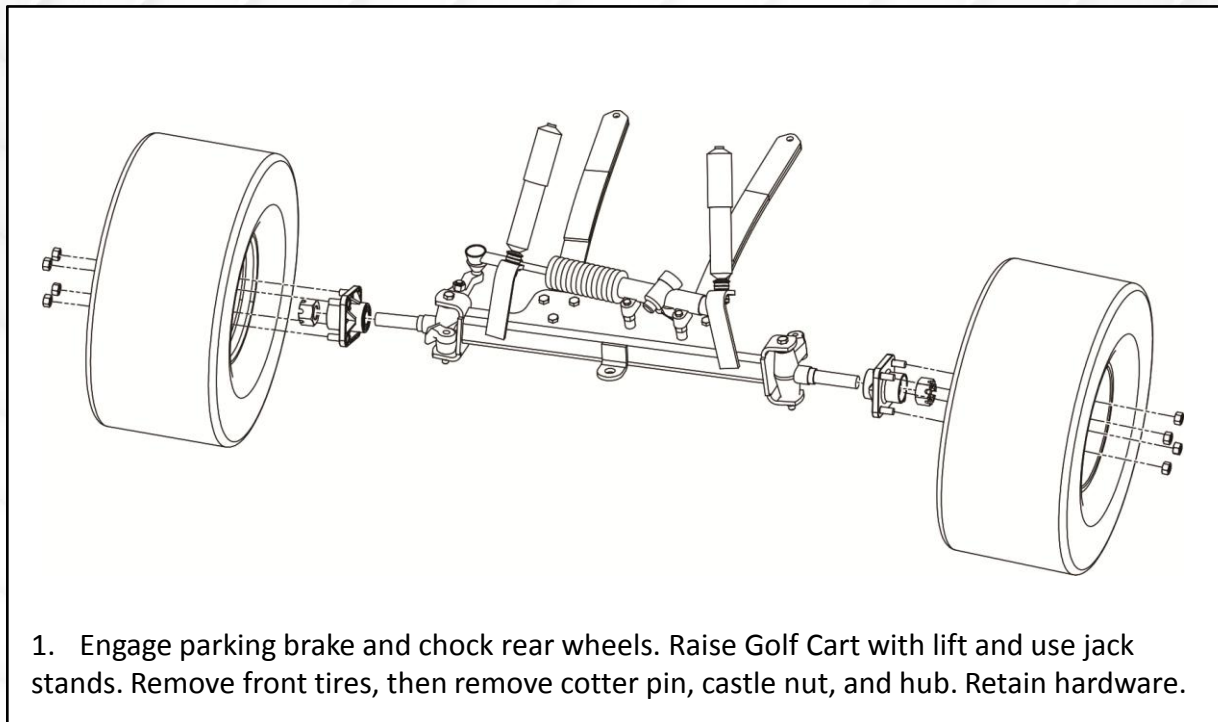
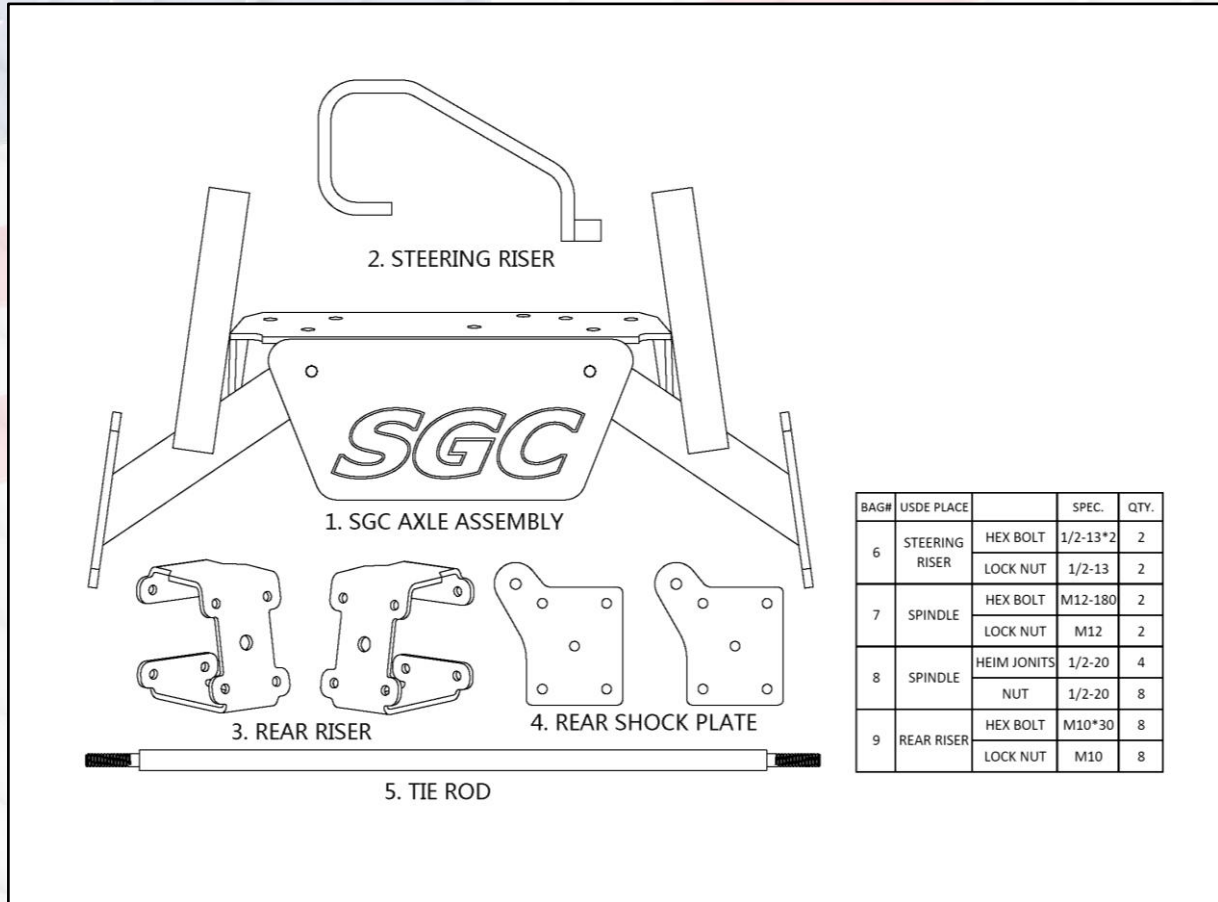
LIFT KIT

FITS EZGO TXT 01.5+, ELEC

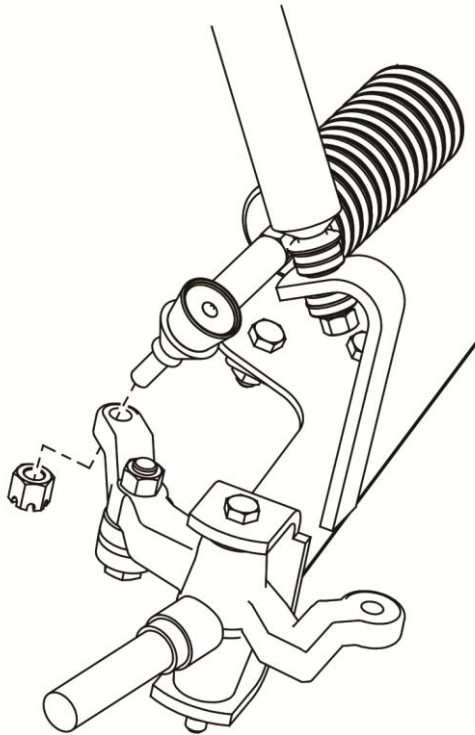
CAMBER ADJUSTABLE

LIFT KIT INSTALLATION INSTRUCTIONS

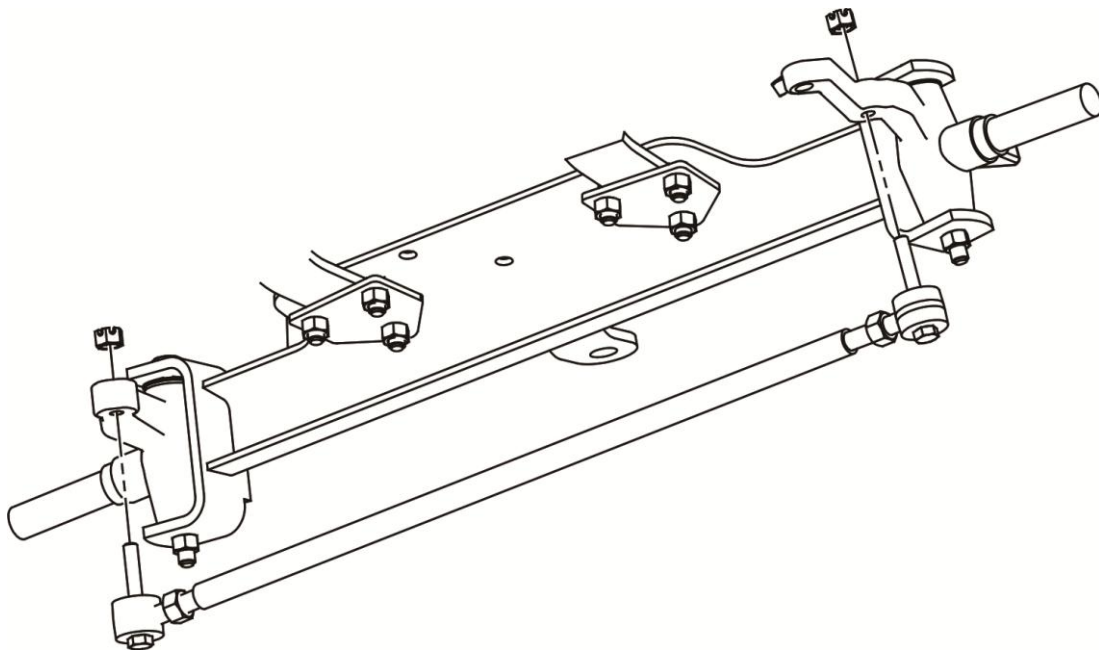
EZGO TXT ELEC, 2001.5 AND UP



LIFT KIT INSTALLATION INSTRUCTIONS
EZGO TXT ELEC, 2001.5 AND UP



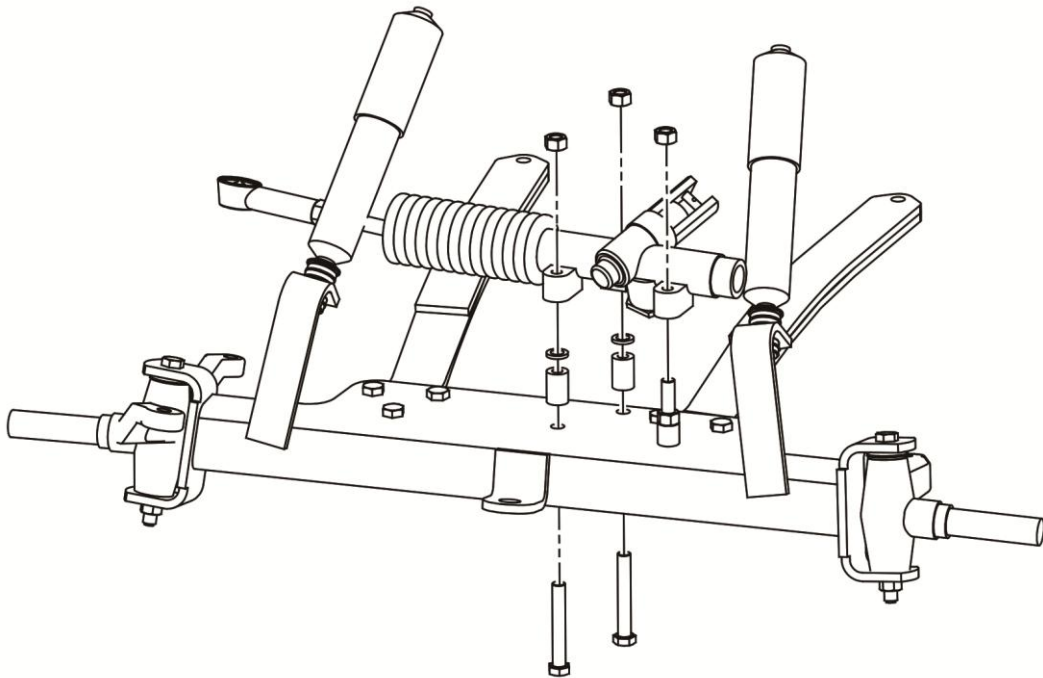
2. Remove cotter pin from castle nut.
Remove castle nut from ball joint and
separate ball joint from spindle. and retain.



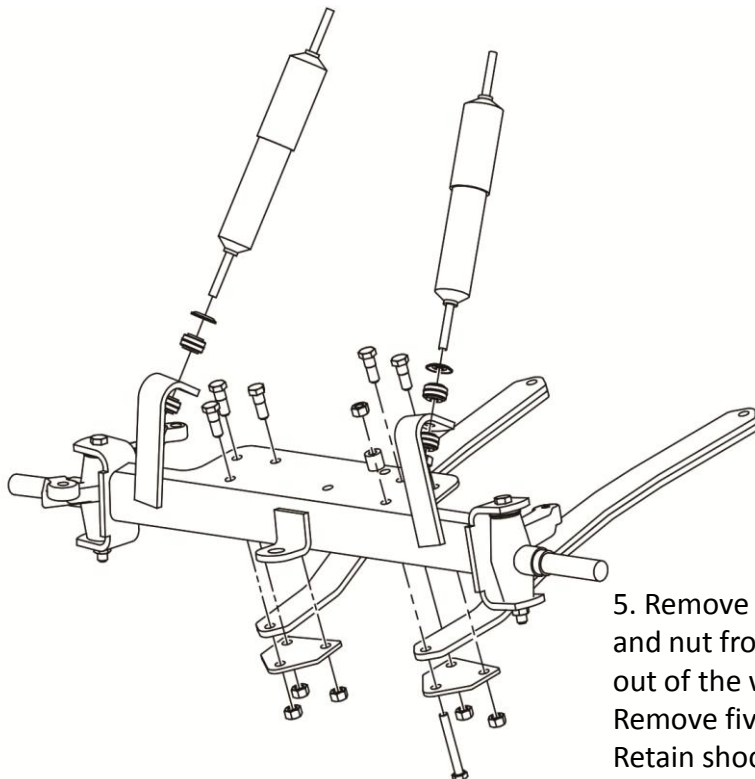
3. Remove tie rod and retain.

LIFT KIT INSTALLATION INSTRUCTIONS

EZGO TXT ELEC, 2001.5 AND UP



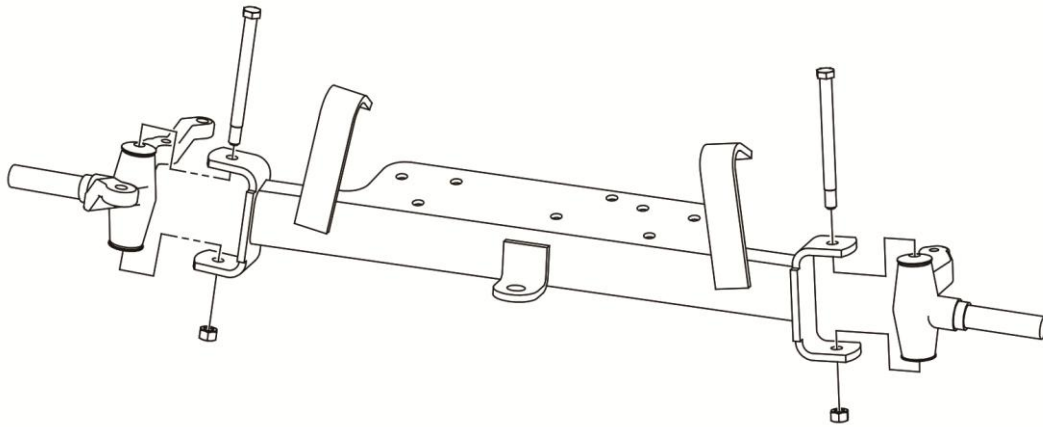
4. Remove three bolts from rack and pinion. Retain Hardware.



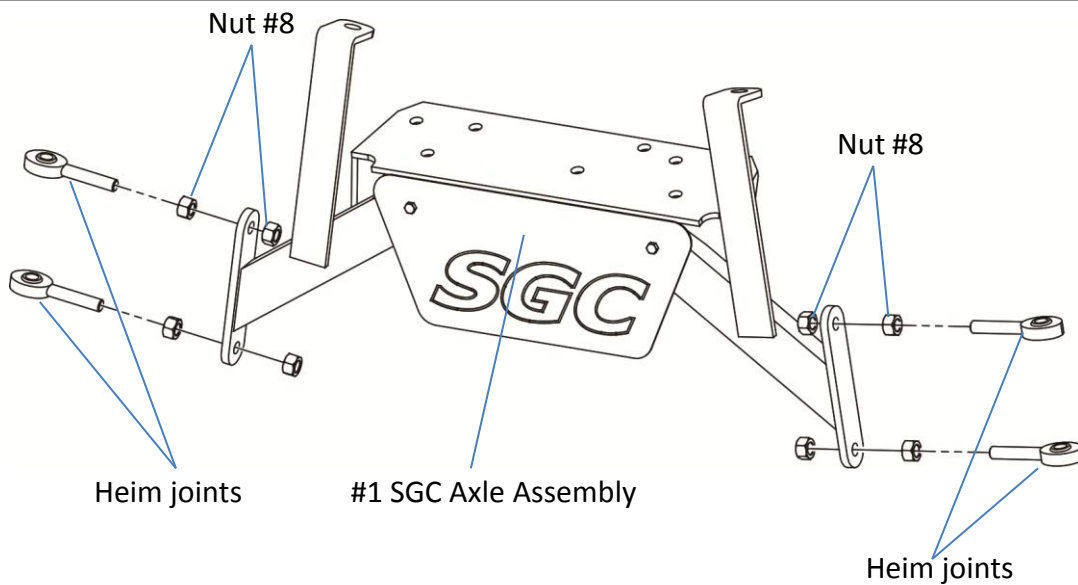
5. Remove the lower washer, bushing, and nut from shock. Push shock up and out of the way. Retain Hardware. Remove five bolts from factory axle. Retain shock plates and hardware.

LIFT KIT INSTALLATION INSTRUCTIONS

EZGO TXT ELEC, 2001.5 AND UP



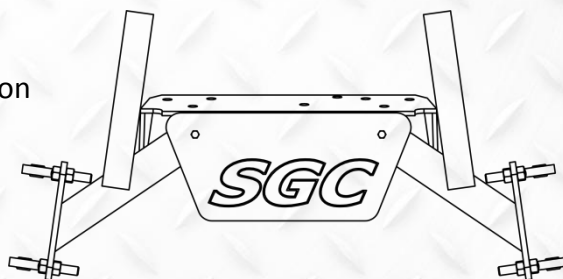
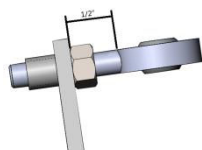
6. Remove spindles from drop axle.



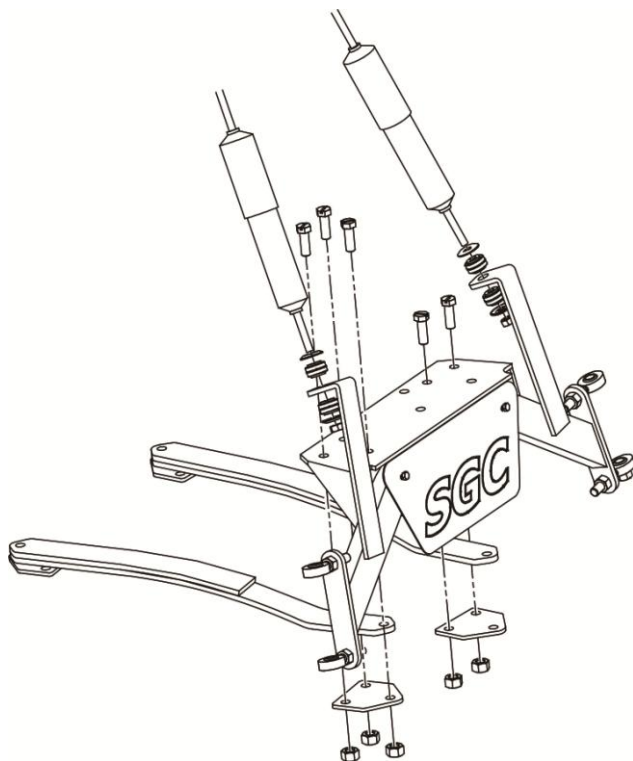
7. Install heim joints on SGC Axle Assembly #1. Use two nuts each from hardware #8. The camber could be adjusted by repositioning the nuts. Recommended nut position for most carts is as shown in below picture. **Don't tighten the nuts until bolts and nuts are tightened in Step 10.**

Recommended nut position

The upper heim joints go in and leave 1/2" on the outside.



LIFT KIT INSTALLATION INSTRUCTIONS EZGO TXT ELEC, 2001.5 AND UP

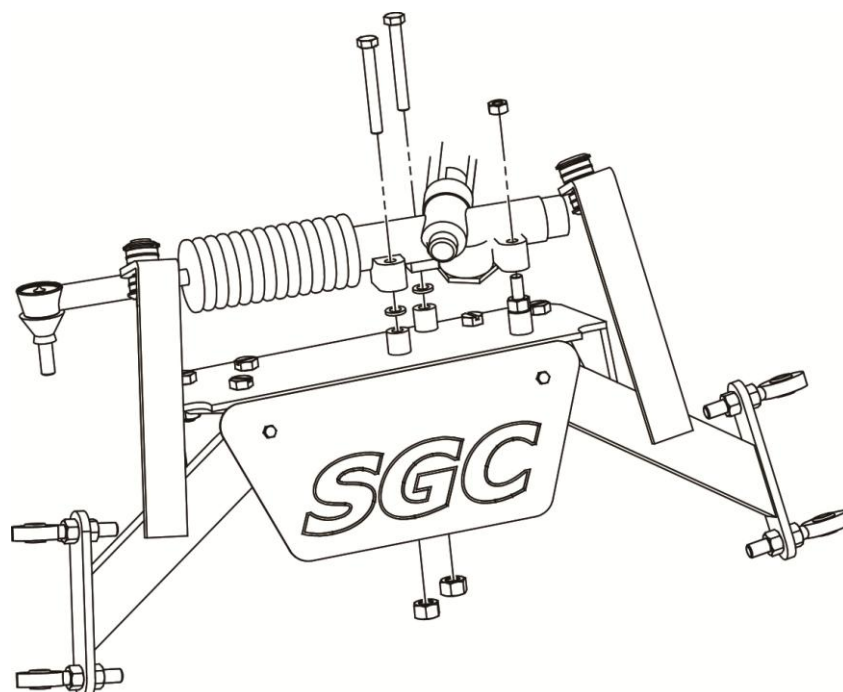


8. Install SGC Axle Assembly to leaf spring and spring retaining plate with factory hardware.

The bolt that goes through the leaf spring goes upward.

Tighten hardware.

Pull shocks down and attach to Axle Assembly to hold in place.



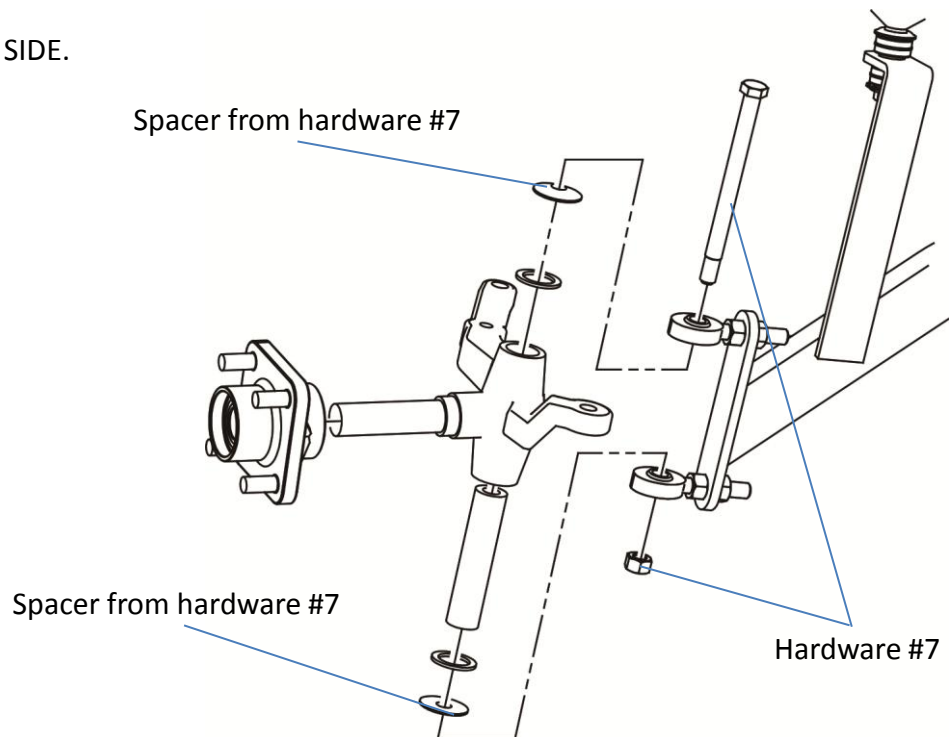
9. Install front bolt for rack and pinion.

IMPORTANT: For ease of installation, frontmost bolt for rack and pinion must be installed before spring plates are reattached.

LIFT KIT INSTALLATION INSTRUCTIONS

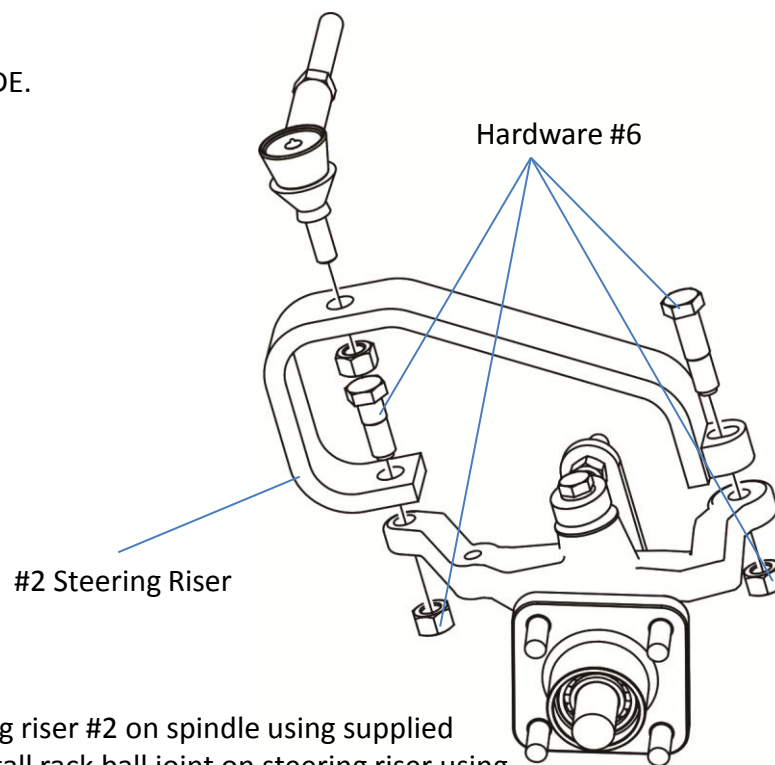
EZGO TXT ELEC, 2001.5 AND UP

DRIVER SIDE.



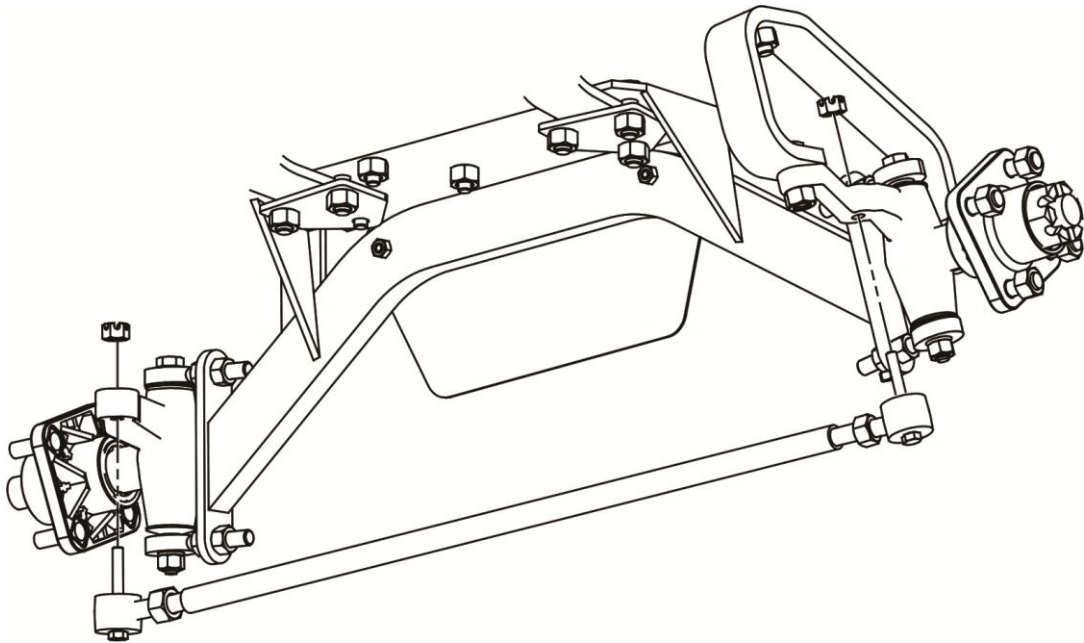
10. Install spindles between heim joints. Using supplied hardware #7. To fix spindle firmly between heim joints, attach spacer to each side of spindle.

PASSENGER SIDE.



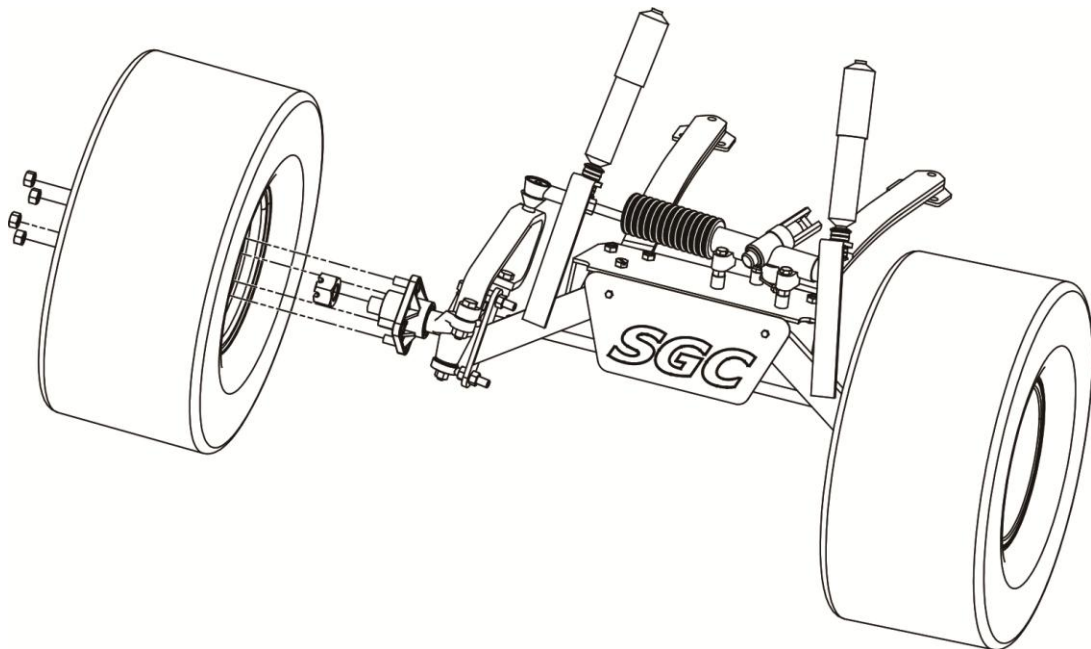
11. Install steering riser #2 on spindle using supplied hardware #6. Install rack ball joint on steering riser using retained hardware.

LIFT KIT INSTALLATION INSTRUCTIONS
EZGO TXT ELEC, 2001.5 AND UP



12. Install tie rod to spindles using retained hardware. Reinstall hubs.

**NOTE: SOME E-Z-GO MODEL CARTS COME STOCK WITH A TIE ROD LONG ENOUGH!
IF THE STOCK TIE ROD JOINTS DO NOT HAVE GREASE FITTINGS FROM WHEEL TO
WHEEL YOU WILL NEED TO INSTALL THE TIE ROD IN THIS KIT.**

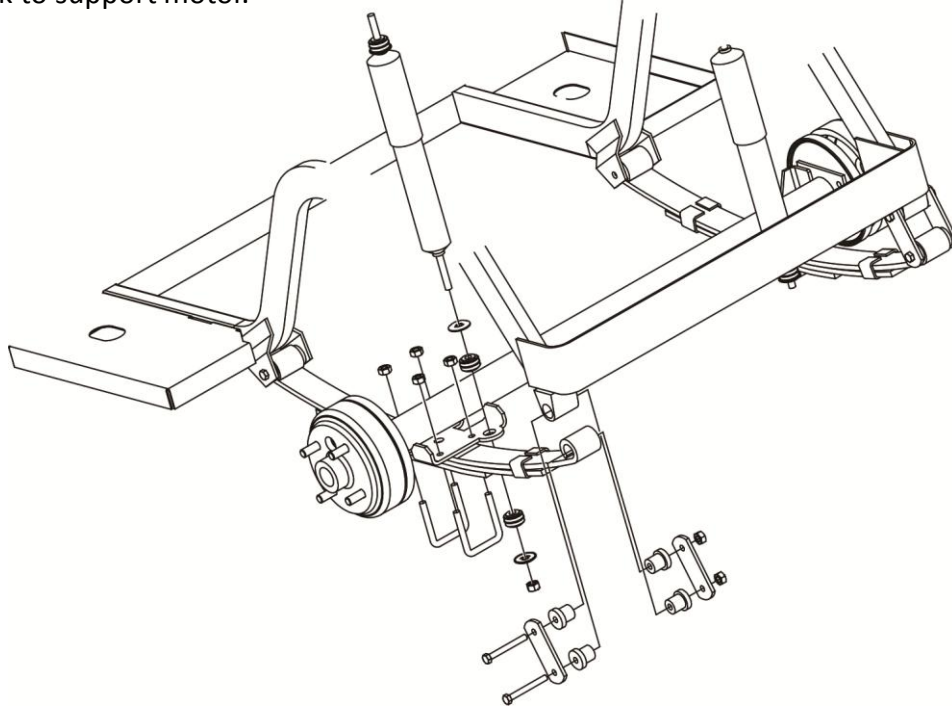


13. Reinstall front tires.

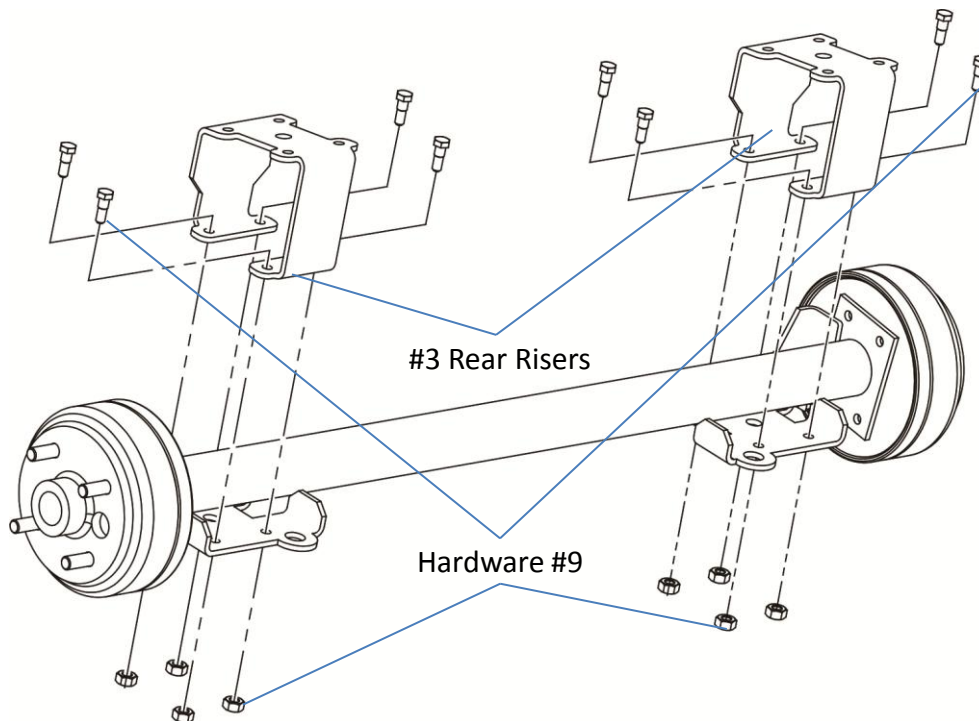
LIFT KIT INSTALLATION INSTRUCTIONS

EZGO TXT ELEC, 2001.5 AND UP

Ensure parking brake is still engaged and chock front wheels.
Use jack to support motor.



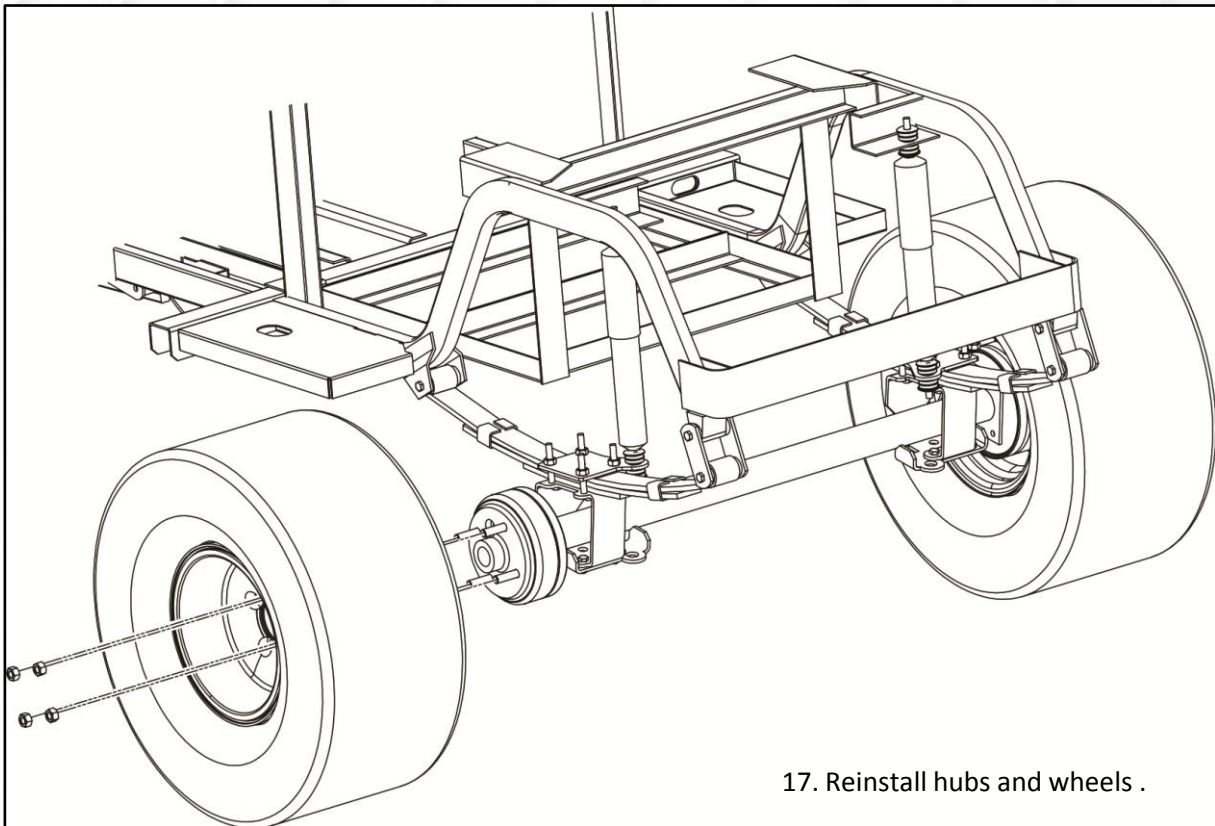
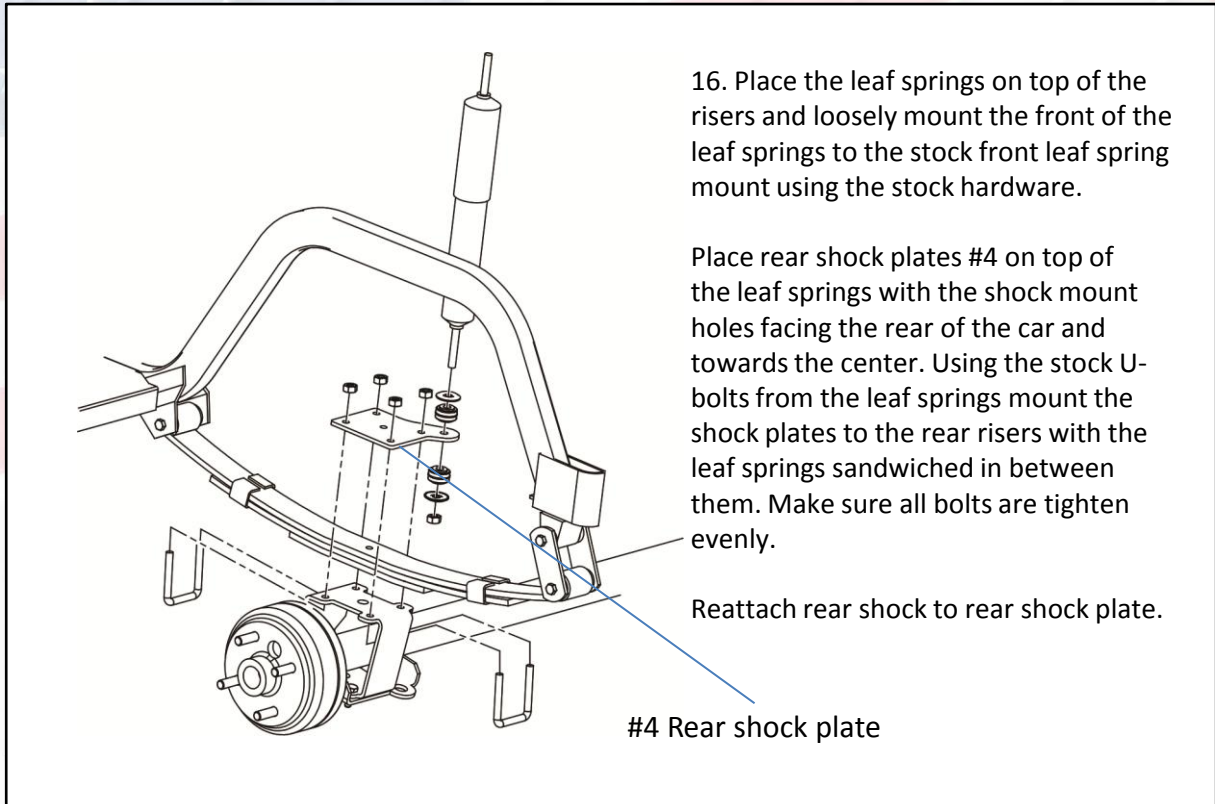
14. Unbolt the rear leaf springs from under the rear end. Save the front and rear leaf spring bolts for reinstallation of the leaf springs. Using the car jack lower the rear end of the cart.



15. Install Rear Riser #3 on top of the axle using supplied hardware #9.

LIFT KIT INSTALLATION INSTRUCTIONS

EZGO TXT ELEC, 2001.5 AND UP





RETURN MERCHANDISE AUTHORIZATION

Dear Valued Customer,

Thank you for choosing Steeleng Golf Cart Accessories for your golf cart needs.

We apologize for the issues you are having with your purchase. We strive to offer the absolute best quality at the absolute best price.

To best serve you, we do need a little information to help process your return and/or exchange faster.

Please complete the following and include this entire form with your return.

Name

Shipped To Address

STATE

ZIP

Purchased with: eBay Direct Phone Order

This is for EXCHANGE REFUND

Please describe reason for return:-

Our Return Address:
Steeleng Golf Cart Accessories
3309 LAURENS ROAD
Greenville, SC 29607
Tele: 864-675-1103

For Office Use Only:

Received By: _____ Date _____
Refund Amount _____ Exchange Issued _____

**Steeleng Golf Cart Accessories reserves the right to charge a 15% restocking fee for all returned and/or exchanged items.