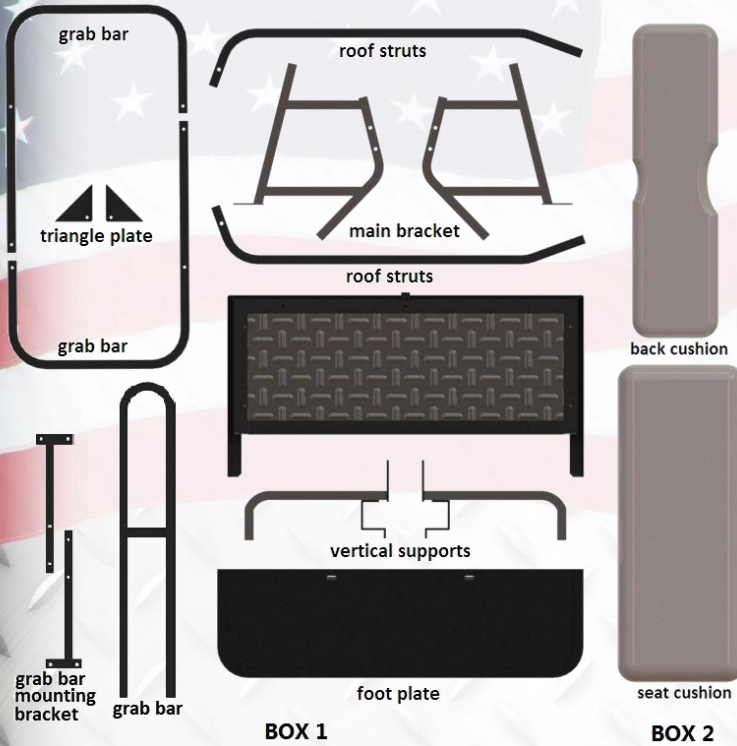


SEAT KIT INSTALLATION INSTRUCTIONS

YAMAHA G14, G16, G19, G22



BAG#	Function	Hardware	Specification	Qty
E-1	arm tubes	hex bolt	1/4-1 1/2	4
		hex bolt	1/4-2 1/2	2
		flat washer	1/4	12
		lock nuts	1/4	6
E-2	flipping cargo bed	hex bolt	1/4-3/4	2
		hex bolt	1/4-1 3/4	2
		flat washer	1/4	8
E-3	back cushion	lock nuts	1/4	4
		hex bolt	1/4-1 3/4	4
		flat washer	1/4	8
E-3	seat cushion	self-drill screw	M4.2*30	6
		hex bolt	3/8-1 1/4	2
E-4	vertical supports to footplate	flat washer	3/8	4
		spring washers	3/8	2
		nut	3/8	2
		hex bolt	1/4-2 1/2	4
E-5	roof struts to arm tubes	flat washer	1/4	8
		lock nuts	1/4	4
		hex bolt	M6*30	2
E-6	canopy	flat washer	M6	4
		spring washers	M6	2
		hex bolt	1/4-1 3/4	8
E-7	grab bar	flat washer	1/4	16
		lock nut	1/4	8



1. Take canopy / rear roof supports / main bracket / basket / engine cover off the cart, keep (4) factory bolts took off from main bracket for future use.



2. Install main brackets using (4) factory bolts (from step 1).



3. Install seat cushion on cargo bed using (6) self-drill screws of E-3.



4. Install vertical supports using (2) factory bolts on bag well liner.



5. Install cargo bed on main bracket/ vertical supports using (4) bolts / nuts / washers of E-2, USE LONGER ONES ON VERTICAL SUPPORTS SIDE.



6. Attach foot plate to vertical supports using (2) bolts / nuts / washers of E-4.

SEAT KIT INSTALLATION INSTRUCTIONS

YAMAHA G14, G16, G19, G22



7. Attach arm tube to cargo bed / foot plate using hardware E-1. LONGER ONES ON FOOTPLATE SIDE. Install triangle brackets between arm tube and footplate.



8. Install rear seat back cushion using (4) bolts of E-3.

For G22 cart owner.

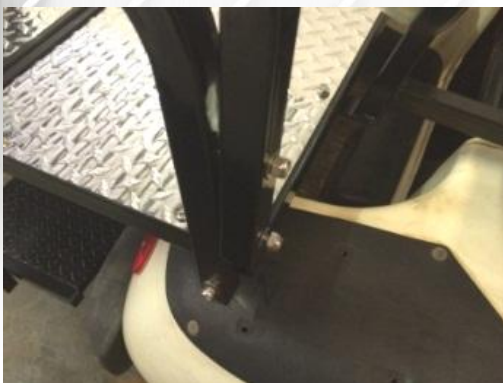


9. Install front seat back cushion using factory bolts.



Install factory rear roof supports on side holes of main bracket using (4) factory bolts / nuts / washers.

For G14-G19 cart owner.



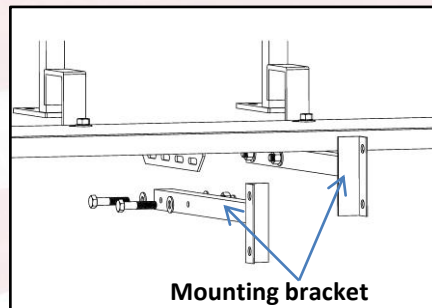
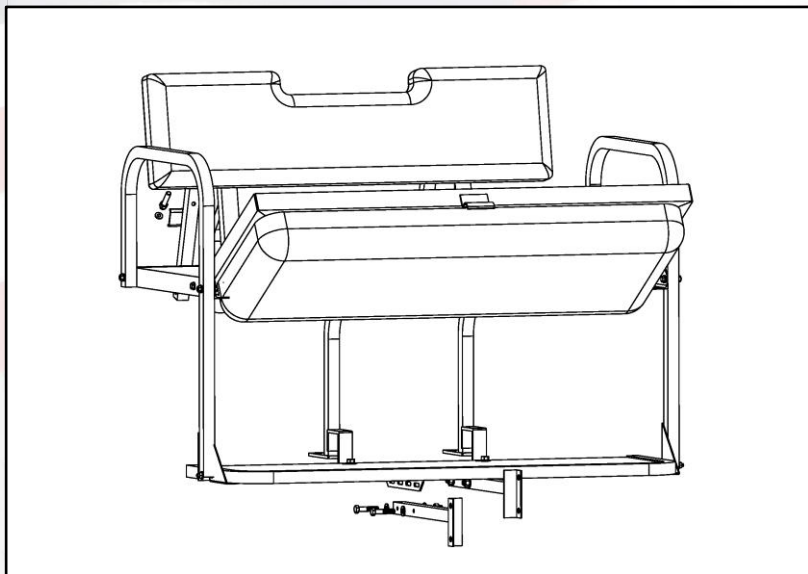
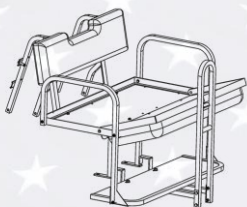
• Install rear roof supports using (4) bolts / nuts / washers of E-5 on arm tube.



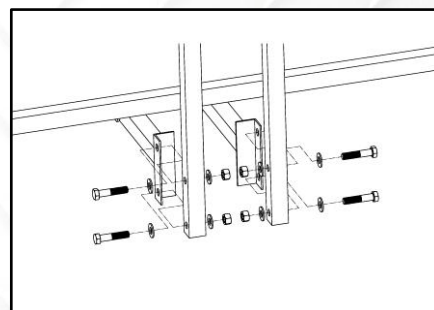
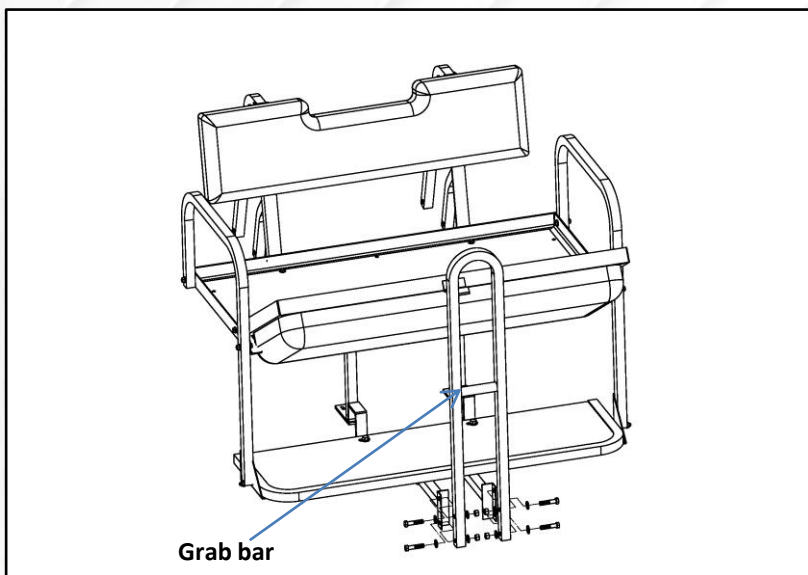
• Install canopy on rear roof supports using (2) bolts / nuts / washers of E-6. Using factory bolts / nuts / washers install on front holes.

GRAB BAR INSTALLATION INSTRUCTIONS

FITS ALL STEELENG REAR FLIP SEAT KIT



1. Install mounting bracket to footplate using 4 supplied 1/4-1 3/4 bolts, washers and nuts.



2. Install grab bar to mounting bracket using 4 supplied 1/4-1 3/4 bolts, washers and nuts.

Please refer to below chart to identify your hardware bag# to install grab bar.

Cart Style	Hardware Bag#	Cart Style	Hardware Bag#
EZGO TXT	B-7	EZGO RXV	R-5
Club Car DS	C-8	Club Car Precedent	A-6
Yamaha G14-G22	E-7	Yamaha Drive	D-7

All specifications mentioned above are subject to change without prior notice.



RETURN MERCHANDISE AUTHORIZATION

Dear Valued Customer,

Thank you for choosing Steeleng Golf Cart Accessories for your golf cart needs.

We apologize for the issues you are having with your purchase. We strive to offer the absolute best quality at the absolute best price.

To best serve you, we do need a little information to help process your return and/or exchange faster.

Please complete the following and include this entire form with your return.

Name

Shipped To Address

STATE

ZIP

Purchased with:

eBay

Direct Phone Order

This is for

EXCHANGE

REFUND

Please describe reason for return:-

Our Return Address:

Steeleng Golf Cart Accessories

3309 Laurens Road,

Greenville, SC 29607

Tele: 864-675-1103

For Office Use Only:

Received By: _____

Date _____

Refund Amount _____

Exchange Issued _____

**Steeleng Golf Cart Accessories reserves the right to charge a 15% restocking fee for all returned and/or exchanged items.