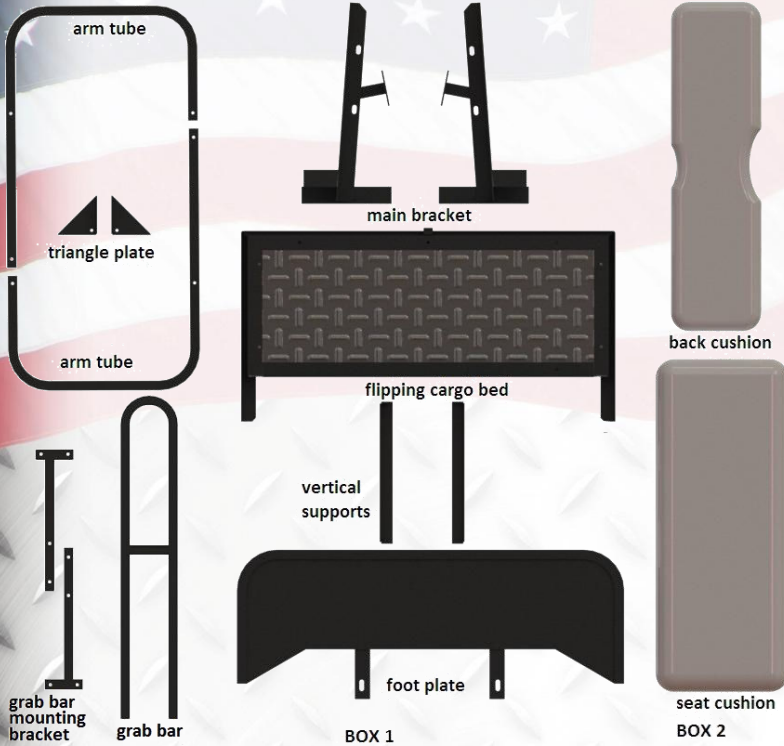


SEAT KIT INSTALLATION INSTRUCTIONS

EZGO TXT



BAG#	Function	Hardware	Specification	Qty
B-1	armrest	hex bolt	1/4-1 1/2	4
		hex bolt	1/4-2 1/2	2
		flat washer	1/4	12
		lock nuts	1/4	6
B-2	flipping cargo bed	hex bolt	1/4-1	4
		flat washer	1/4	8
		lock nuts	1/4	4
B-3	footplate	hex bolt	3/8-2	2
		flat washer	3/8	4
		spring washers	3/8	2
		nut	3/8	2
B-4	main bracket	hex bolt	3/8-1 1/2	4
		flat washer	3/8	4
		spring washers	3/8	4
		nut	3/8	4
B-5	roof struts to main bracket	hex bolt	5/16-1 3/4	4
		flat washer	5/16	8
		lock nuts	5/16	4
B-6	Back cushion	hex bolt	1/4-1	4
	Seat cushion	flat washer	1/4	4
B-7	grab bar	self-drill screw	M4.2*30	6
		hex bolt	1/4-1 3/4	8
		flat washer	1/4	16
		lock nut	1/4	8

INSTALLATION



1. Remove all canopy hardware from 4 corners (2 in front and 2 in rear) of vehicle canopy. Retain the hardware. You will need them to reattach canopy.
2. Remove bolts from front seat back. Retain bolts. You will need them to reattach front seat back.
3. Remove and retain hardware that holds rear struts to vehicle. Slide out rear struts. You will need this hardware later.
4. Remove rear basket hardware. Lift off basket.

SEAT KIT INSTALLATION INSTRUCTIONS

EZGO TXT



5. Install seat cushion on flipping cargo bed. Use hardware B-6.



6. Use a 1/2" drill bit, remove bag well rivets. Bolt foot plate to the underside of the bagwell and put the vertical supports (slotted hole on top) through the extruded bolt and secure. Use hardware B-3.



7. Set in main brackets and line up holes with ones where basket bolts were removed. Remove the access engine cover to tighten bolts from inside and put back the cover. Use hardware B-4.

8. Install flipping cargo bed on vertical supports and on main brackets. Use hardware B-2.



9. Install arm tubes to flipping cargo bed and foot plate, use hardware B-1 (longer bolts on foot plate). Install triangle brackets behind armrest and under foot plate.

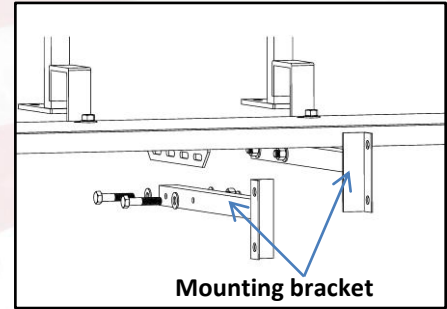
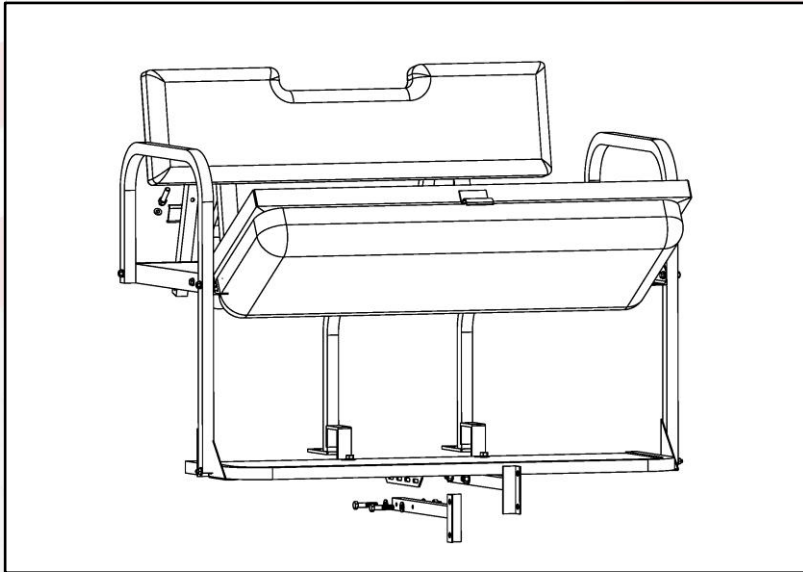


10. Install rear roof struts to main bracket, use hardware B-5. Install rear seat back to main frame, use hardware B-6. Attach front seat back to main bracket and reattach canopy.

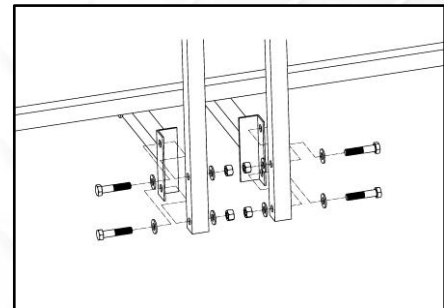
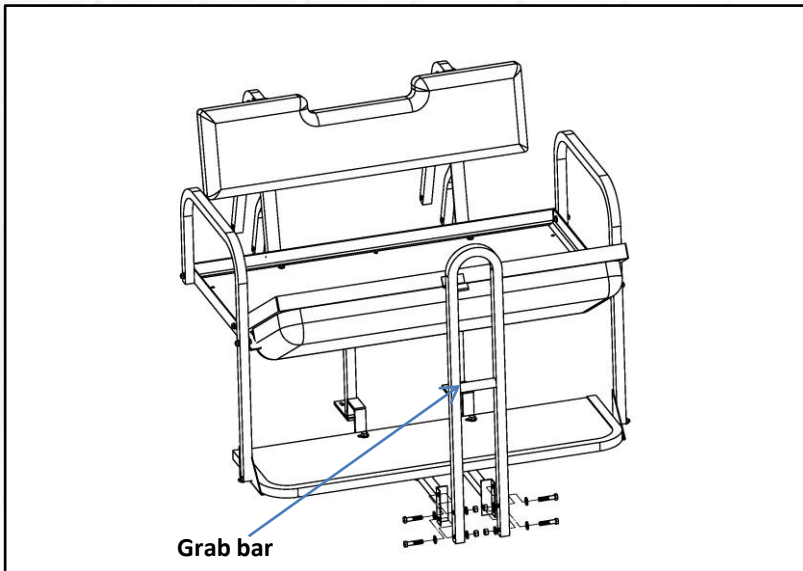


GRAB BAR INSTALLATION INSTRUCTIONS

FITS ALL STEELING REAR FLIP SEAT KIT



1. Install mounting bracket to footplate using 4 supplied 1/4-1 3/4 bolts, washers and nuts.



2. Install grab bar to mounting bracket using 4 supplied 1/4-1 3/4 bolts, washers and nuts.

Please refer to below chart to identify your hardware bag# to install grab bar.

Cart Style	Hardware Bag#	Cart Style	Hardware Bag#
EZGO TXT	B-7	EZGO RXV	R-5
Club Car DS	C-8	Club Car Precedent	A-6
Yamaha G14-G22	E-7	Yamaha Drive	D-7

All specifications mentioned above are subject to change without prior notice.



RETURN MERCHANDISE AUTHORIZATION

Dear Valued Customer,

Thank you for choosing Steeleng Golf Cart Accessories for your golf cart needs.

We apologize for the issues you are having with your purchase. We strive to offer the absolute best quality at the absolute best price.

To best serve you, we do need a little information to help process your return and/or exchange faster.

Please complete the following and include this entire form with your return.

Name

Shipped To Address

STATE

ZIP

Purchased with:

eBay

Direct Phone Order

This is for

EXCHANGE

REFUND

Please describe reason for return:-

Our Return Address:

Steeleng Golf Cart Accessories

3309 Laurens Road,

Greenville, SC 29607

Tele: 864-675-1103

For Office Use Only:

Received By: _____

Date _____

Refund Amount _____

Exchange Issued _____

**Steeleng Golf Cart Accessories reserves the right to charge a 15% restocking fee for all returned and/or exchanged items.